



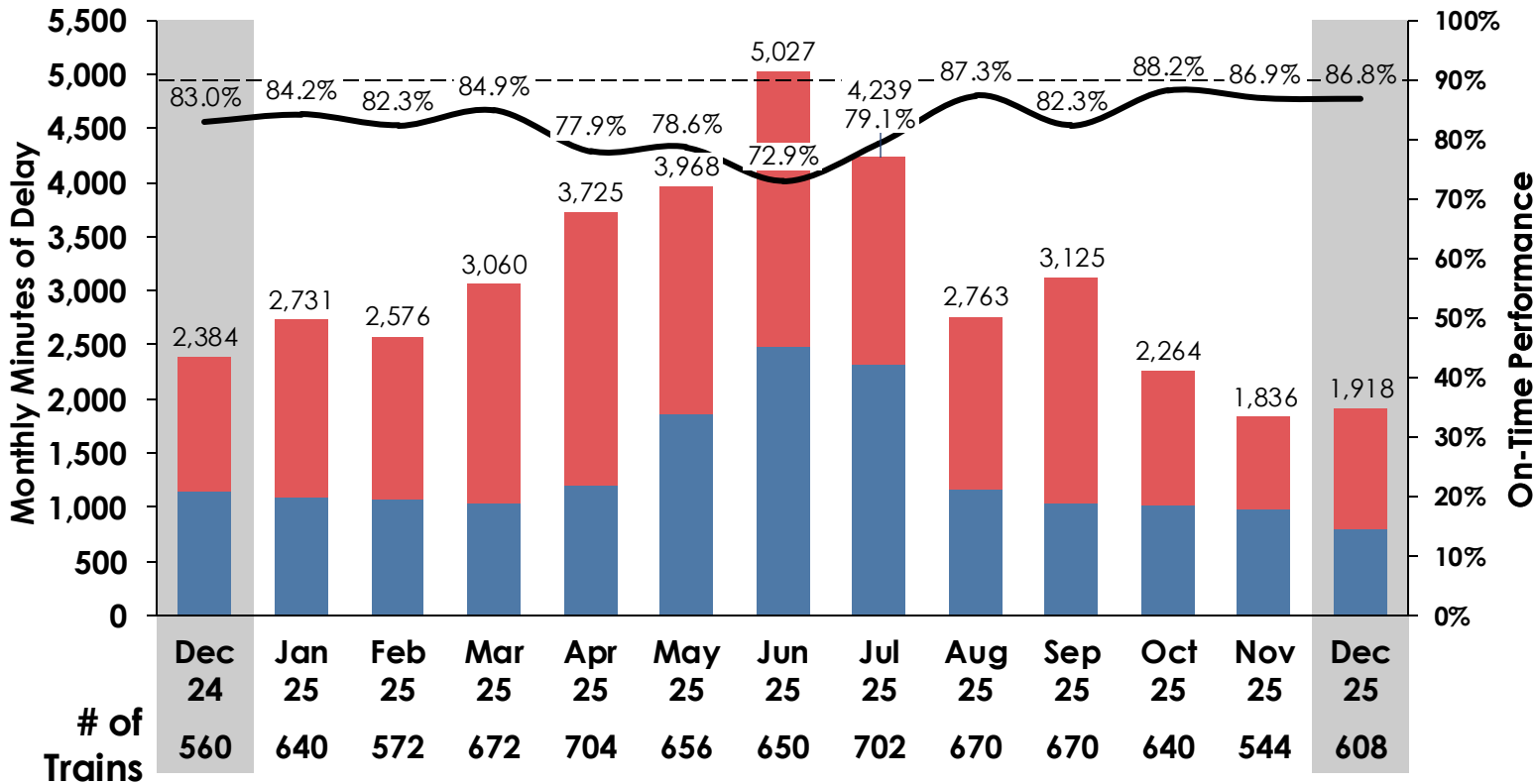
Service Performance Update

January 22, 2026

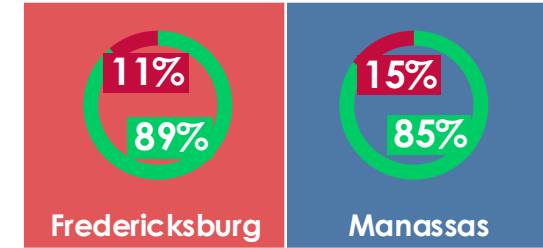
VRE Performance

VRE On-Time Performance: trains arrive at last scheduled stop within 6 minutes of schedule

VRE Last Station OTP and Delay Minutes

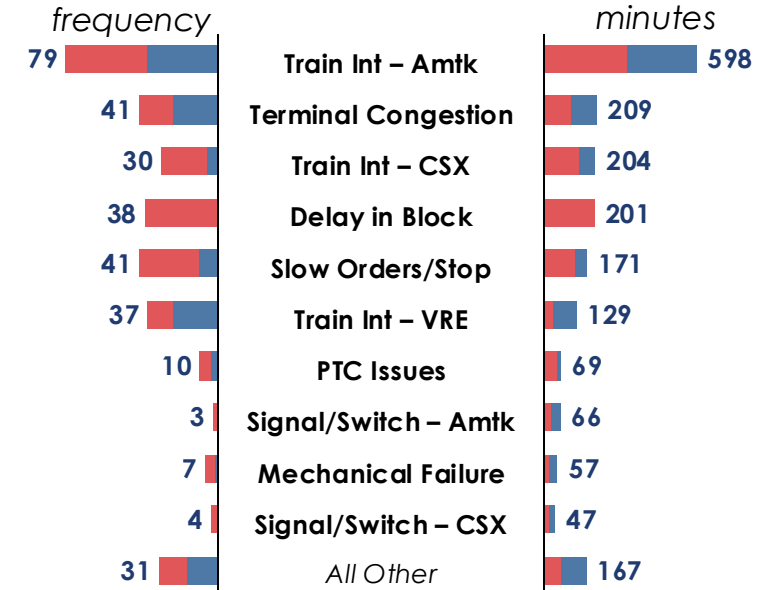


Endpoint On-Time Performance, December 2025



On-Time Late

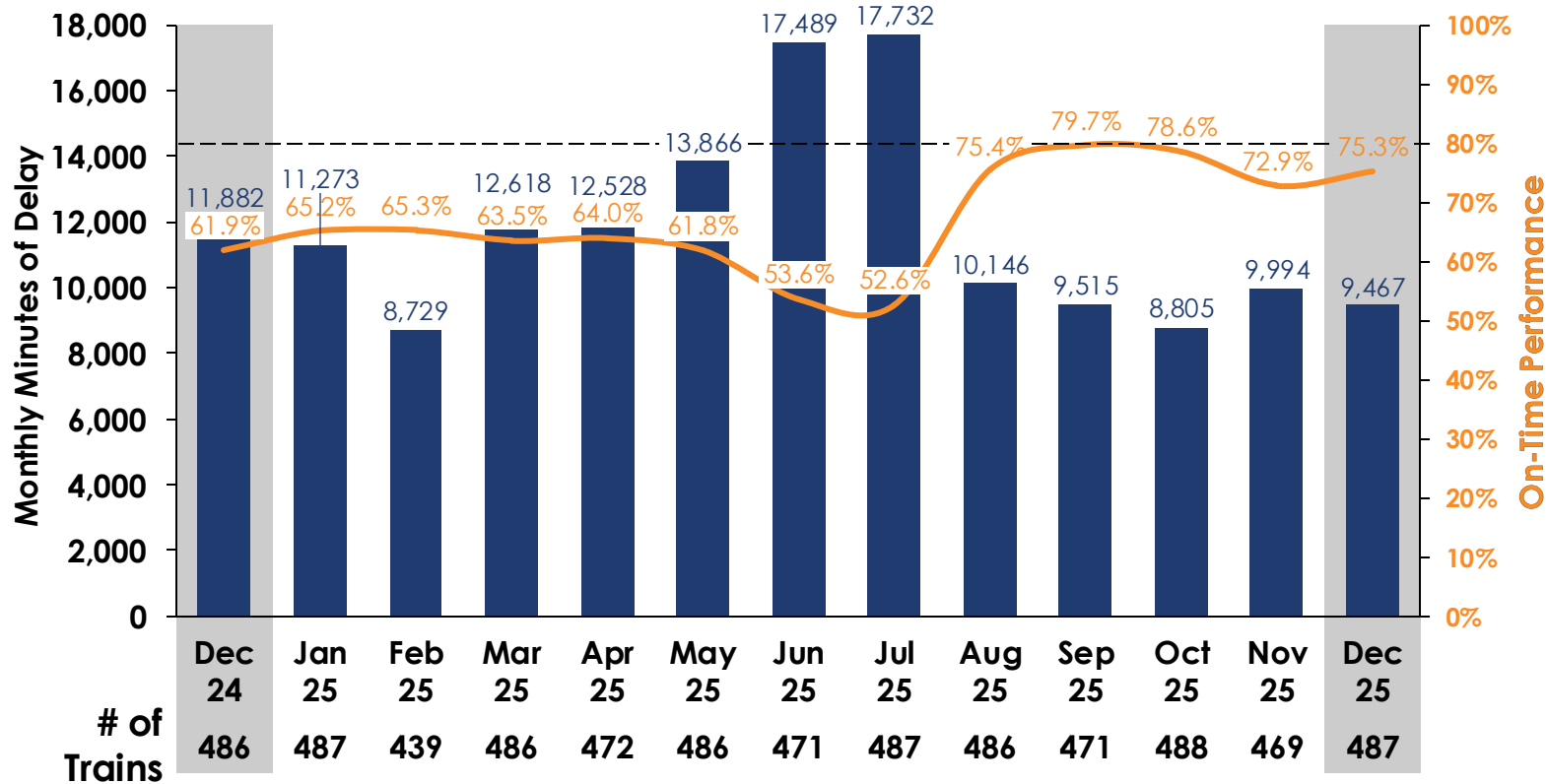
Top 10 Delays, December 2025



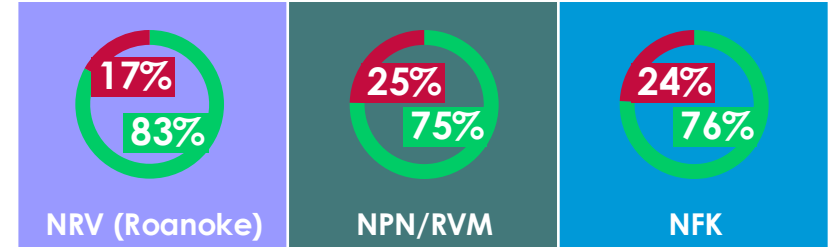
NE Regional Performance

Amtrak On-Time Performance: trains arrive at scheduled stop within 15 minutes of schedule

NE Regional All-Station OTP v. Delay Minutes (RF&P Corridor Only)^{1,2,3}

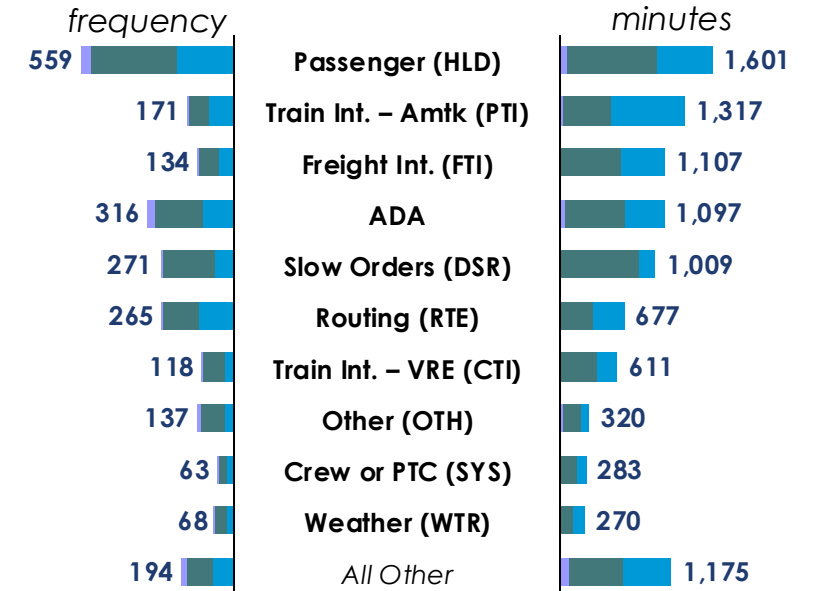


All-Station¹ On-Time Performance, December 2025



On-Time (Green) Late (Red)

Top 10 Delays², December 2025



(1) OTP excludes OTP on NS Roanoke Corridor. (2) Delay minutes exclude NOD and all delays on NS.

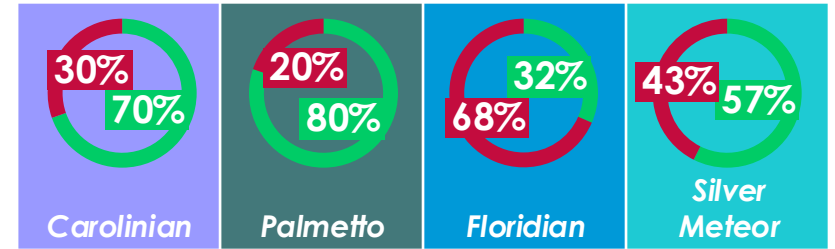
(3) Trains 65 and 67 are shown based on the day they operated in Virginia.



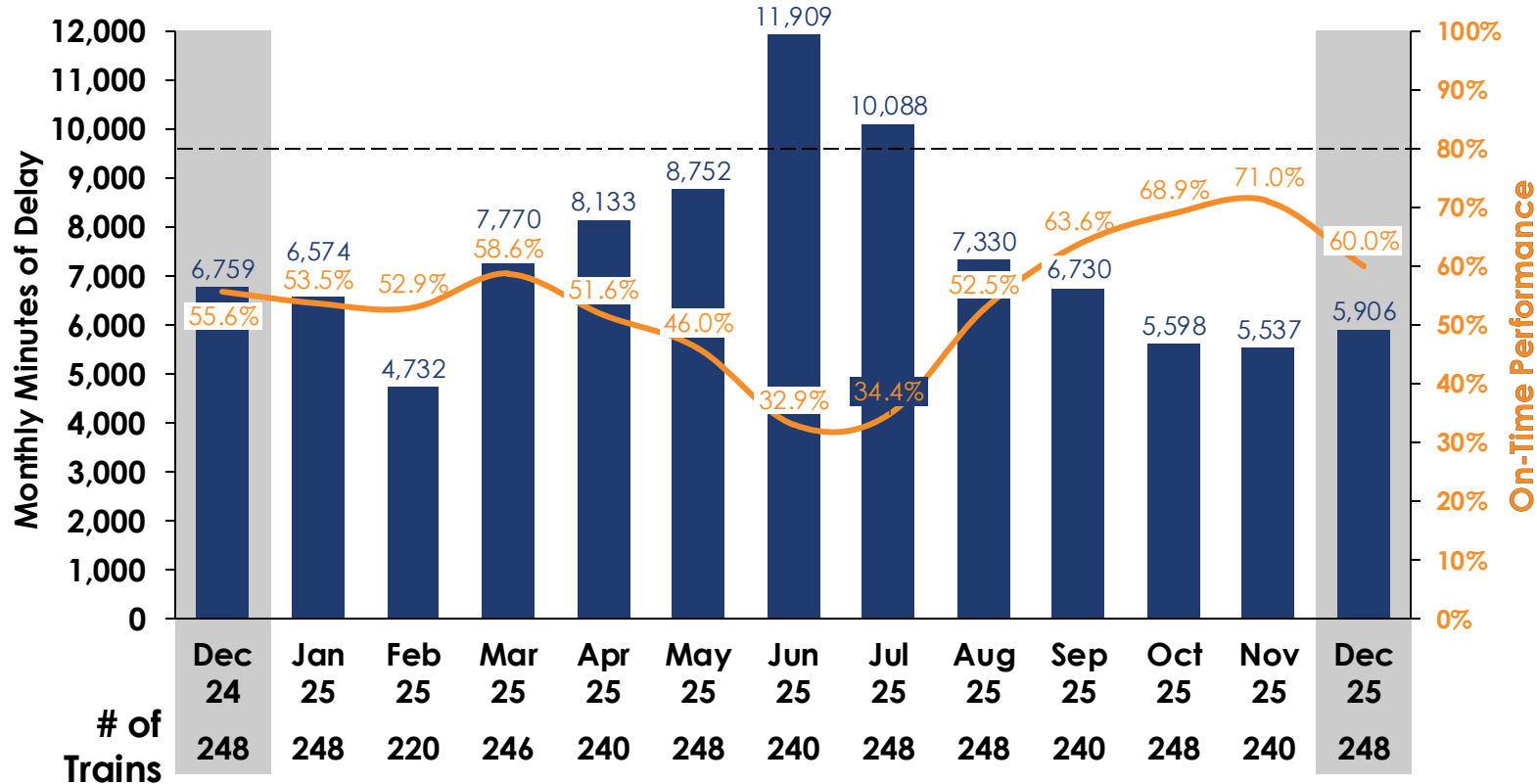
Long Distance Performance

Amtrak On-Time Performance: trains arrive at scheduled stop within 15 minutes of schedule

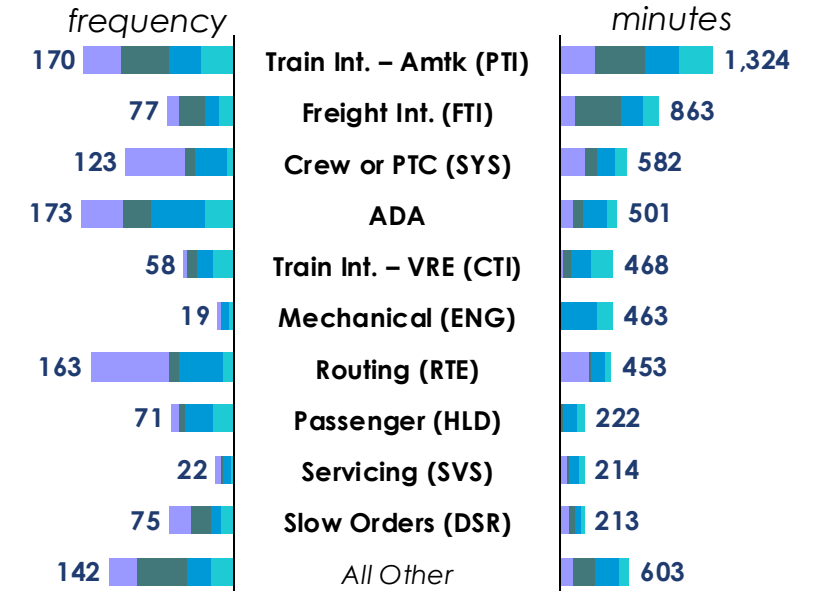
All-Station¹ On-Time Performance, December 2025



Long Distance All-Station OTP v. Delay Minutes (RF&P Corridor Only)^{1,2,3,4}



Top 10 Delays², December 2025



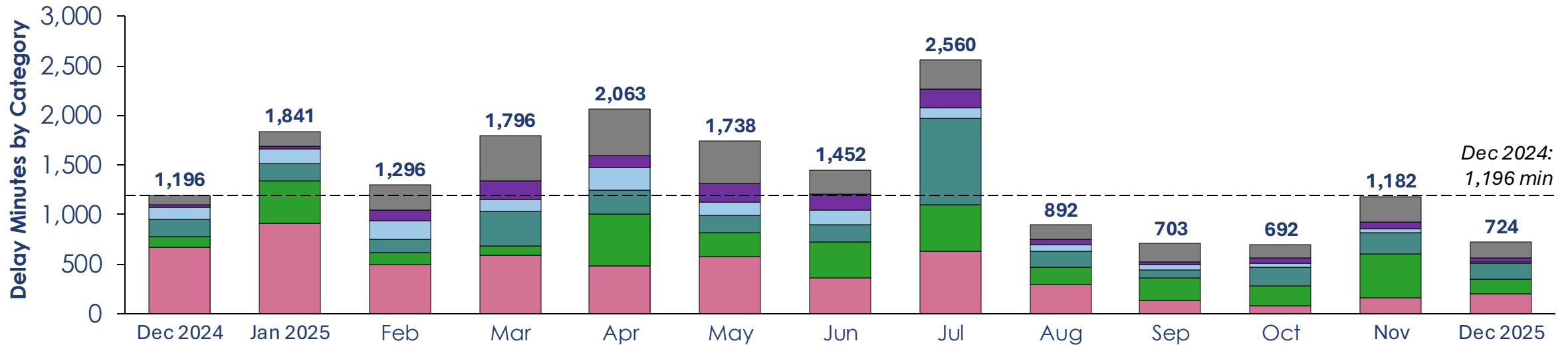
(1) OTP excludes OTP on NS Roanoke Corridor and stations outside VA/DC (2) Delay minutes exclude NOD and all delays on NS

(3) Long distance trains include Carolinian, Palmetto, Floridian, and Silver Meteor (4) Trains 40, 41, 92, and 98 are shown based on the day they operated in Virginia.



Southbound delay minutes at Washington Union Station improved throughout 2025, especially after July

Top 5 Southbound Delay Categories at WAS by Month¹



Top 2025 Delay Causes

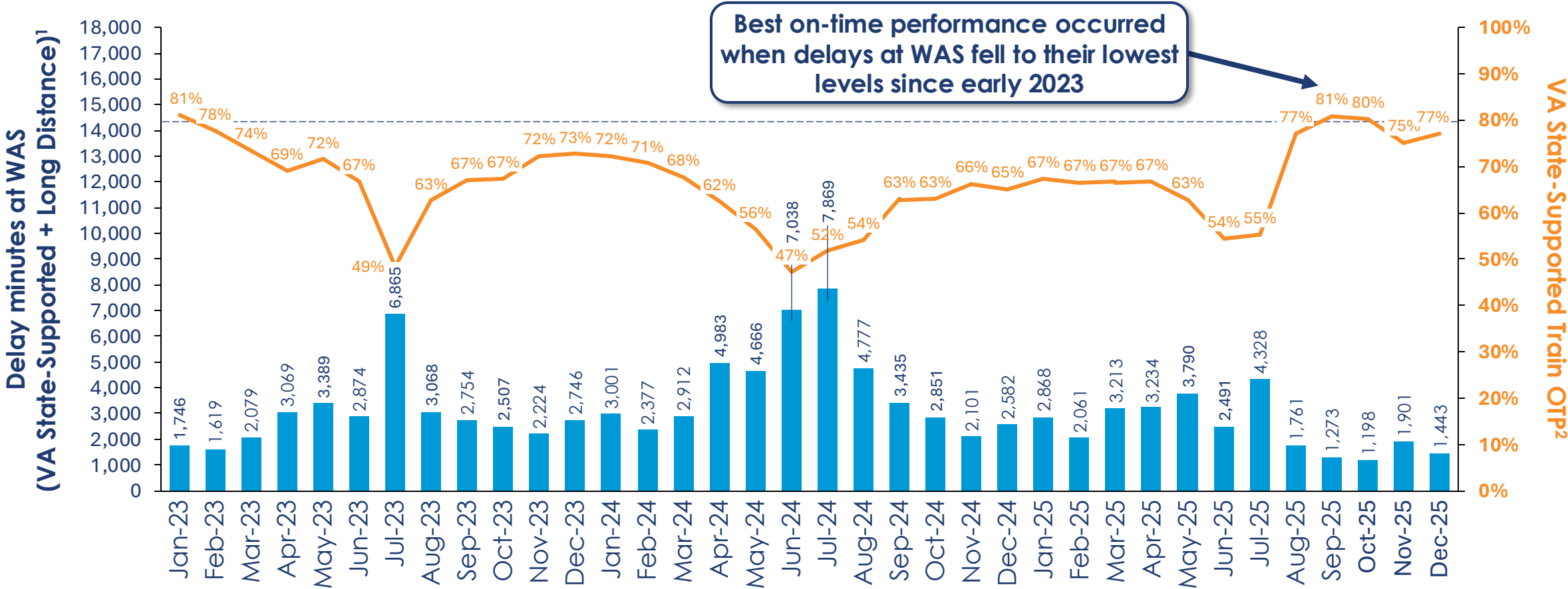
- 1. **SVS** Servicing
- 2. **ENG** Mechanical (Locomotive)
- 3. **SYS** Crew or PTC Issues
- 4. **PTI** Amtrak Train Interference
- 5. **CAR** Mechanical (Coach)
- All Other Delays**

(1) Excludes NOD and delays on the *Cardinal* and *Crescent*



On-time performance on Virginia State-Supported service is correlated with the severity of delays at WAS

Amtrak delay minutes at WAS vs. on-time performance



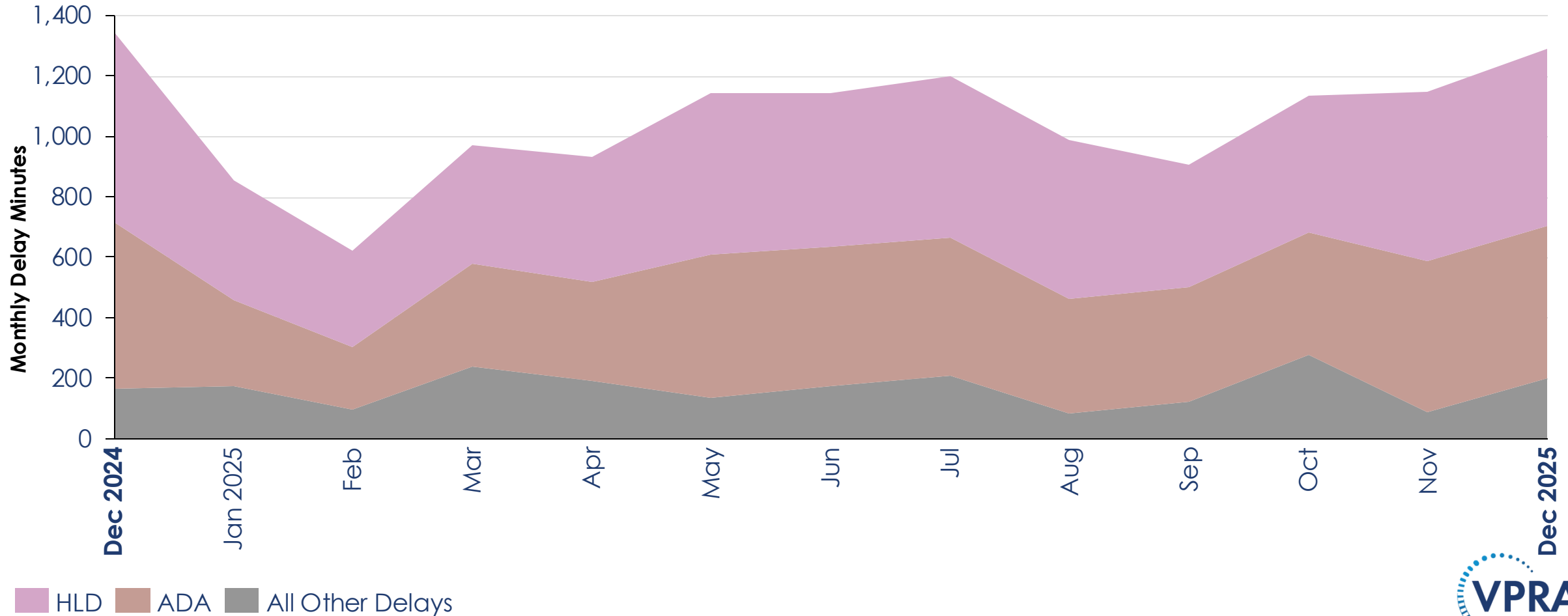
Best on-time performance occurred when delays at WAS fell to their lowest levels since early 2023

(1) Excludes NOD and delays on the Cardinal and Crescent
 (2) Includes NE Regional OTP on both NS Roanoke and CSX RF&P corridors; Also includes OTP for both SB and NB trains at WAS.



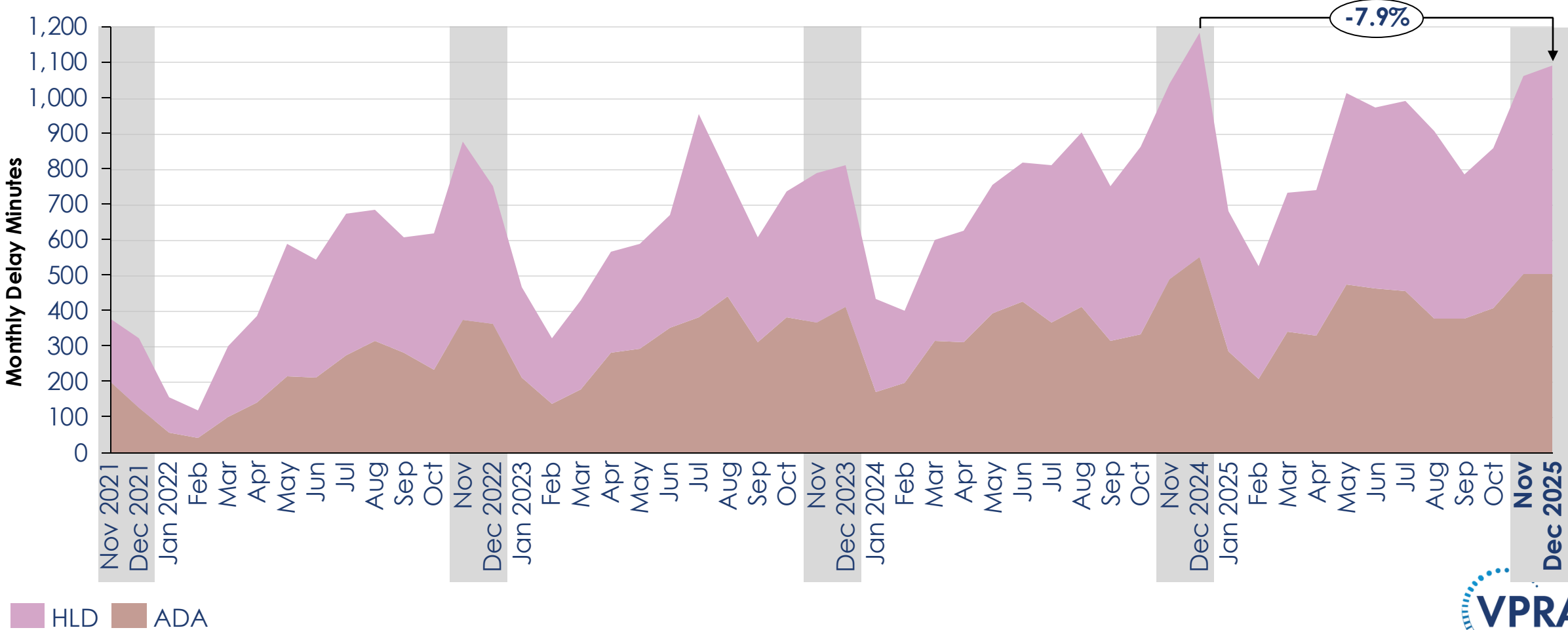
Alexandria frequently has 1,000+ minutes of in-station delay every month, largely attributed to HLD and ADA delays

Monthly ADA/HLD Delay Minutes at Alexandria
December 2024-December 2025

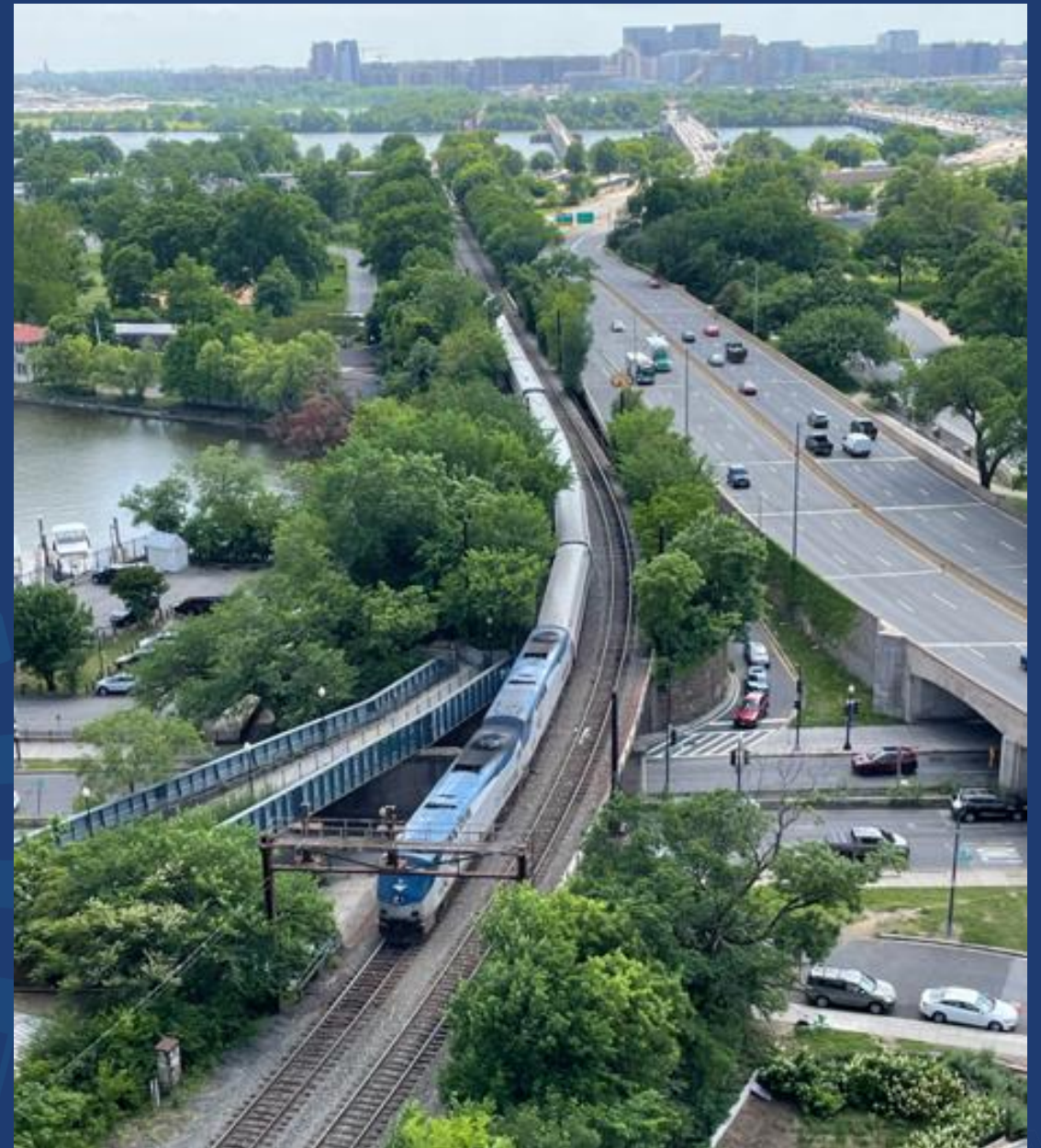


ADA and HLD delays generally increase at the end of the year with higher ridership, but December ADA/HLD delay minutes fell year-over-year

Monthly ADA/HLD Delay Minutes at Alexandria
November 2021-December 2025



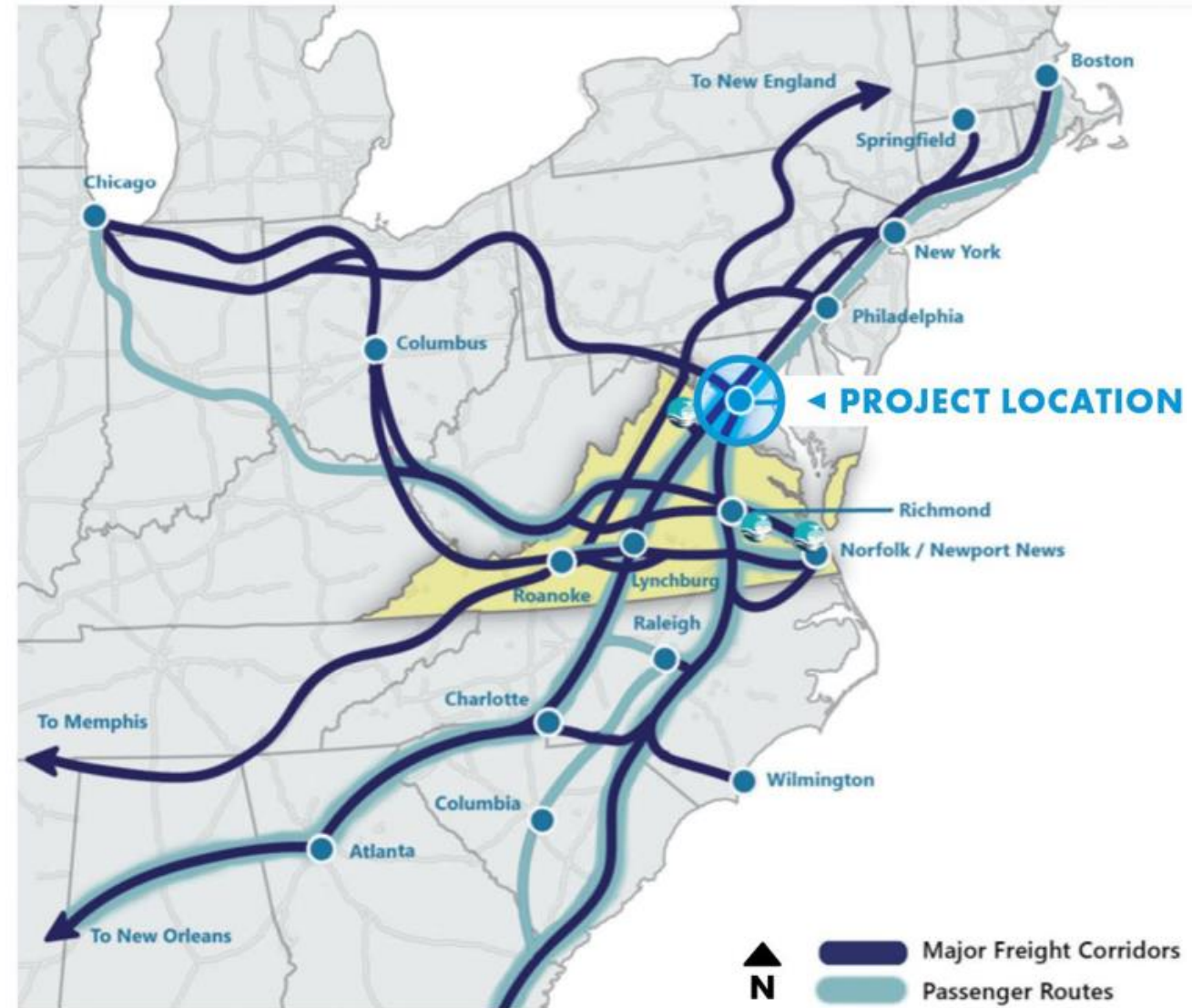
Long Bridge – North Package



The Long Bridge Project

Service planning for LB-N work windows affects trains from Chicago to Florida; New Orleans to the NEC.

- NEC Projects require service changes and outages too.
- Resolving conflicts locally requires avoiding further conflicts beyond Virginia.



Plan 0 and Plan A

Plan 0- 3 '30 total outage/ 1'hr 15 single track

0

- Effective January 12-March 15
- Temporary schedule allowing for Long Bridge Work to start
- Giving parties more time to find solutions for Trains 79 (Carolinian), 89 (Palmetto), and 51 (Cardinal)

Plan A- 4'45 total outage

A

- Effective March 15-November 1
- SPC may identify adjustments as work progresses
- Partial-full restoration of service for winter holidays

Amtrak Service in Virginia pre-service changes

Amtrak Virginia



Eight roundtrips

Amtrak Long-Distance

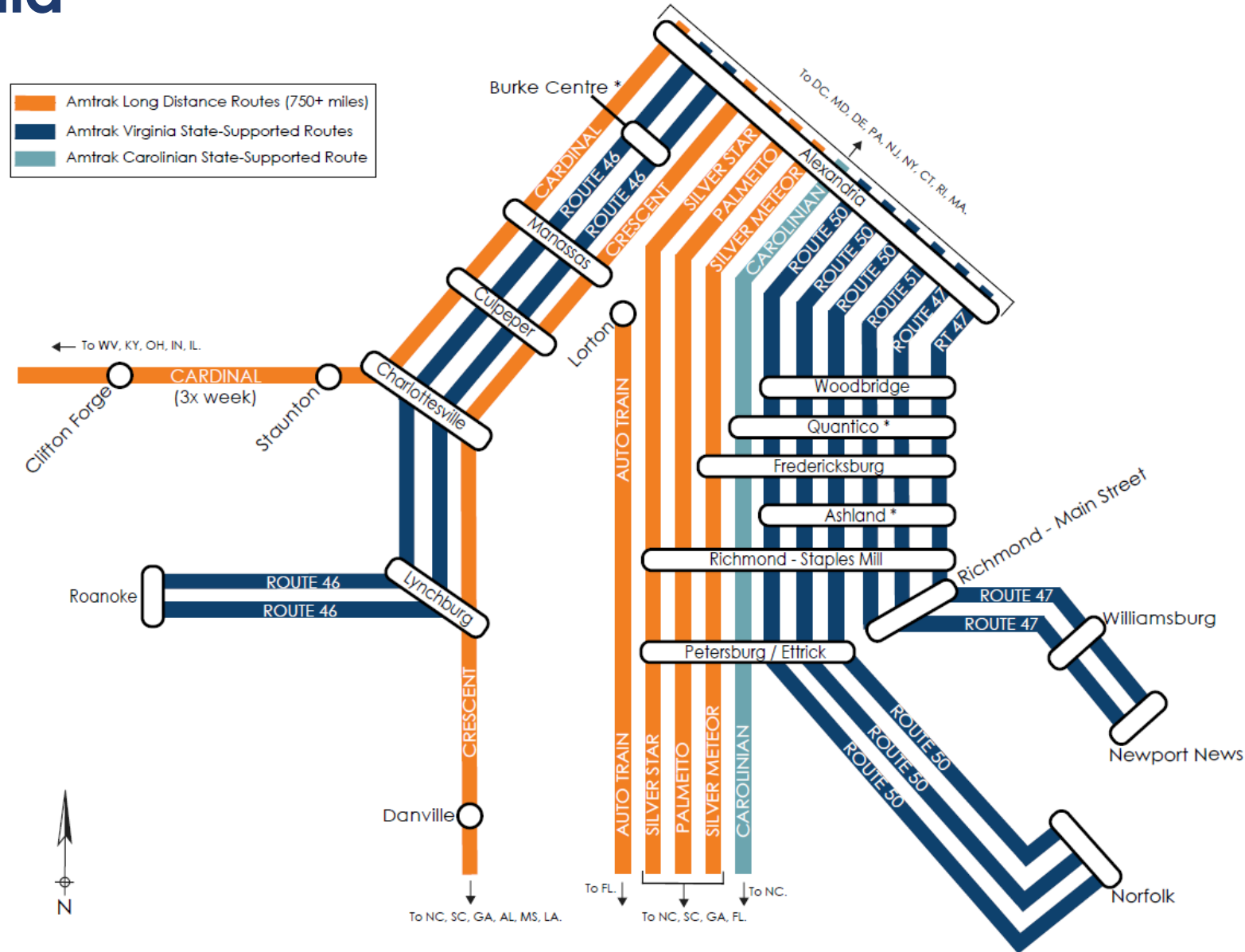


Six round-trips

Carolinian



One round-trip



Amtrak Service in Virginia - 2026

Amtrak Virginia



Six roundtrips



Two roundtrips

Amtrak Long-Distance

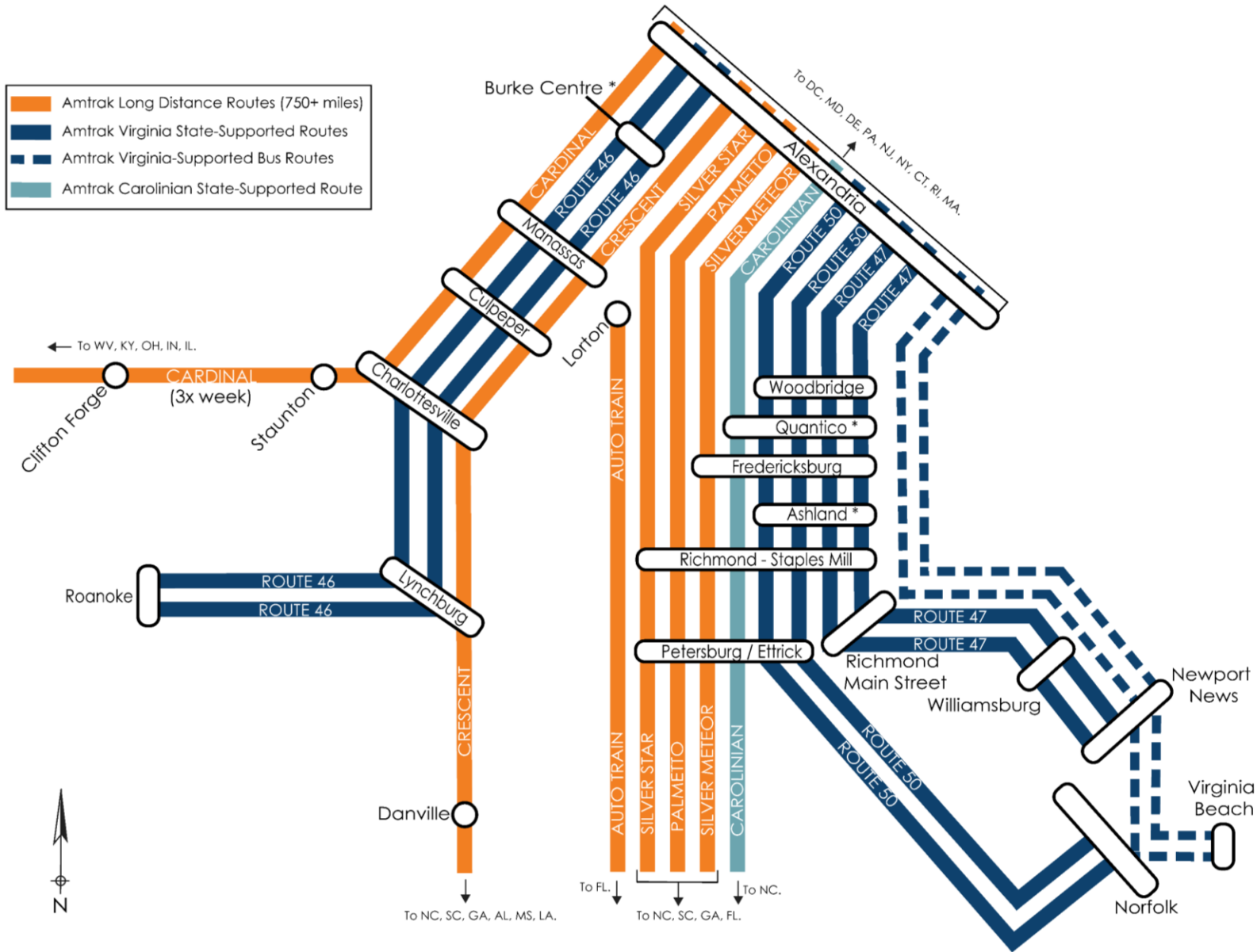


Six round-trips

Carolinian



One round-trip



Service Performance Committee

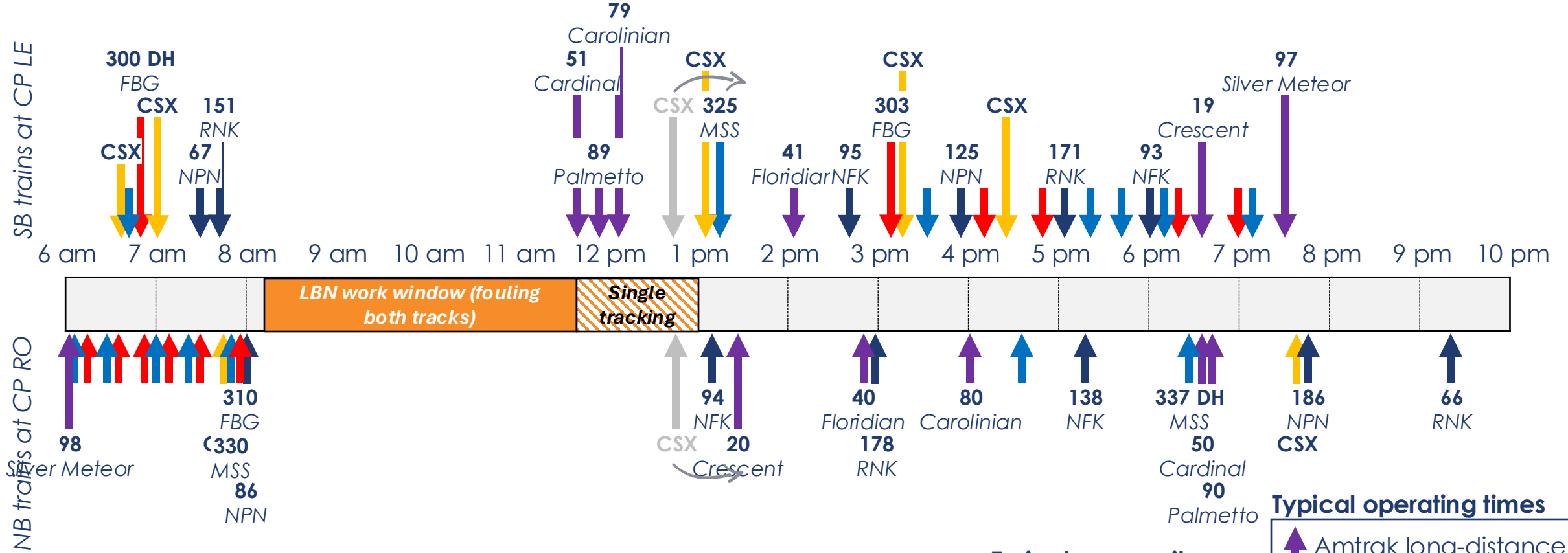


<ul style="list-style-type: none"> • Dispatcher feedback • Planned work updates 	<ul style="list-style-type: none"> • Daily TFR reports • Feedback from supervisors, customer-facing employees 	<ul style="list-style-type: none"> • Conductor reports (KORS) • Engineer reports (PTC observation system) 	<ul style="list-style-type: none"> • Construction productivity and progress • Upcoming impacts (VIMA)
---	---	---	---

- Weekly Meetings – Fridays at 8am
- Bi-weekly meetings
- Quarterly Executive meetings
- On-site and enroute with customer facing staff



Plan 0 (Jan 12-Mar 15) approved changes to service on weekdays



“Last trains through” before window will be VRE 310 and Amtrak 86

Trains short-turning at ALX

↑	↑	↑	↑	↓	↓	↓	↓
332	312	334	314	301	305	311	329
MSS	FBG	MSS	FBG	FBG	FBG	FBG	MSS

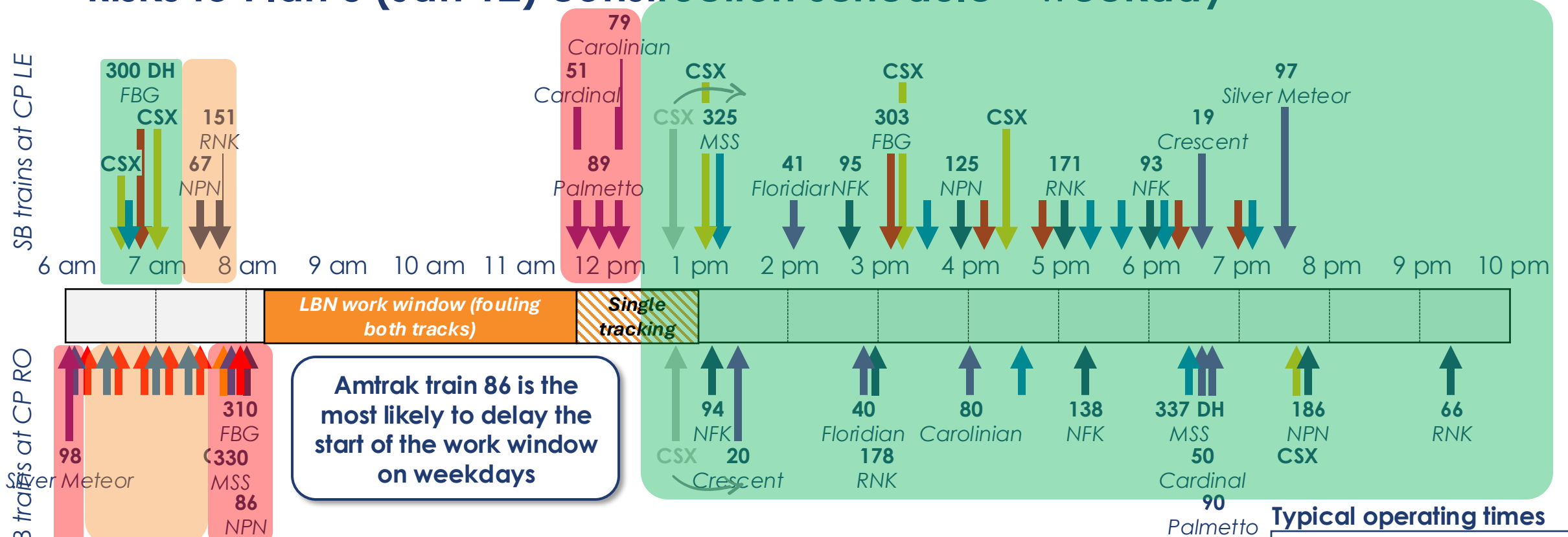
Trains temporarily replaced by buses

↑	↑	↓	↓
174	84	141	85
NPN	NFK	NFK	RVM

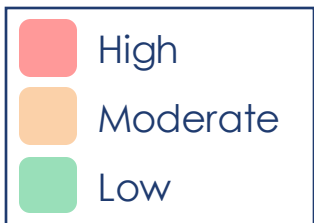
Typical operating times

- ↑ Amtrak long-distance
- ↑ Amtrak NE Regional
- ↑ VRE FBG
- ↑ VRE MSS
- ↑ CSX freight

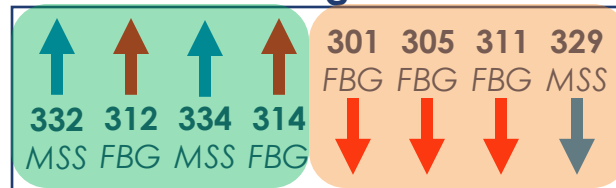
Risks to Plan 0 (Jan 12) construction schedule – weekday



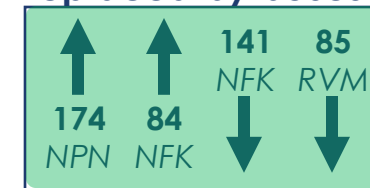
Risks to schedule



Trains short-turning at ALX



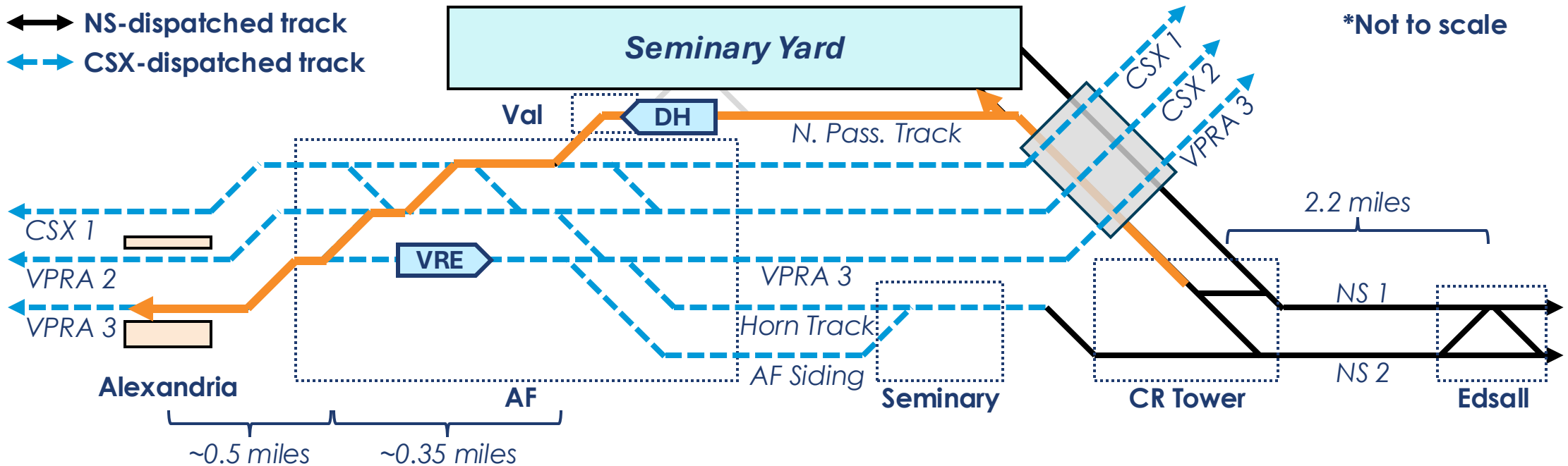
Trains temporarily replaced by buses



Typical operating times



Seminary Yard deadhead moves




- There are four “**Alexandria Shuffles**” scheduled in the afternoon where passengers will have to transfer from one VRE train running from WAS to an originating VRE train that deadheads from Seminary Yard.
- These need to be treated like **a guaranteed transfer**, with the originating train waiting in the event the train from WAS is late.
- CSX indicated that the preferred sequence is for the deadhead to wait until the through-train has passed. VRE wants to ensure the transfer doesn't take longer than 10 minutes.

Rider Outreach: Station Canvassing

Train Schedules Are Changing!




Starting in January 2026

The Long Bridge rail project over the Potomac River is under construction. Once finished, it will relieve one of the largest rail bottlenecks on the East Coast. **Amtrak and VRE are making temporary service adjustments to accommodate construction.**



Scan the QR code or visit VAPassengerRailAuthority.org to:

- View the Amtrak and VRE service adjustments that may affect you
- Sign up to receive construction alerts
- Learn more about Transforming Rail in Virginia



About Transforming Rail in Virginia

Temporary Changes. Lasting Improvements.

Transforming Rail in Virginia is improving Virginia's rail network to deliver more service and better performance for people and goods traveling by rail. The investments result in significantly expanded Amtrak and VRE service (including first-ever weekend and late-night service). The next generation of rail is on the way.



YOUR COMMUTE IS CHANGING

Beginning January 12, 2026, the Long Bridge expansion project will impact VRE service. Select Manassas and Fredericksburg trains will end at Alexandria, with transfers available to Metro's Yellow Line. Scan the QR codes for the full schedule and stay up to date with Train Talk Alerts.

vre.org/long-bridge



TRAIN TALK ALERTS



UPDATED SCHEDULE

-  VAPassengerRail.org
-  contactus@vpra.virginia.gov
-  (804) 303-8700
-  /VAPassengerRail
-  @VAPassengerRail
-  @VAPassengerRail
-  Virginia Passenger Rail Authority





↑ ♿ To Trains
← ♿ To Station
· Crossing
· Restrooms

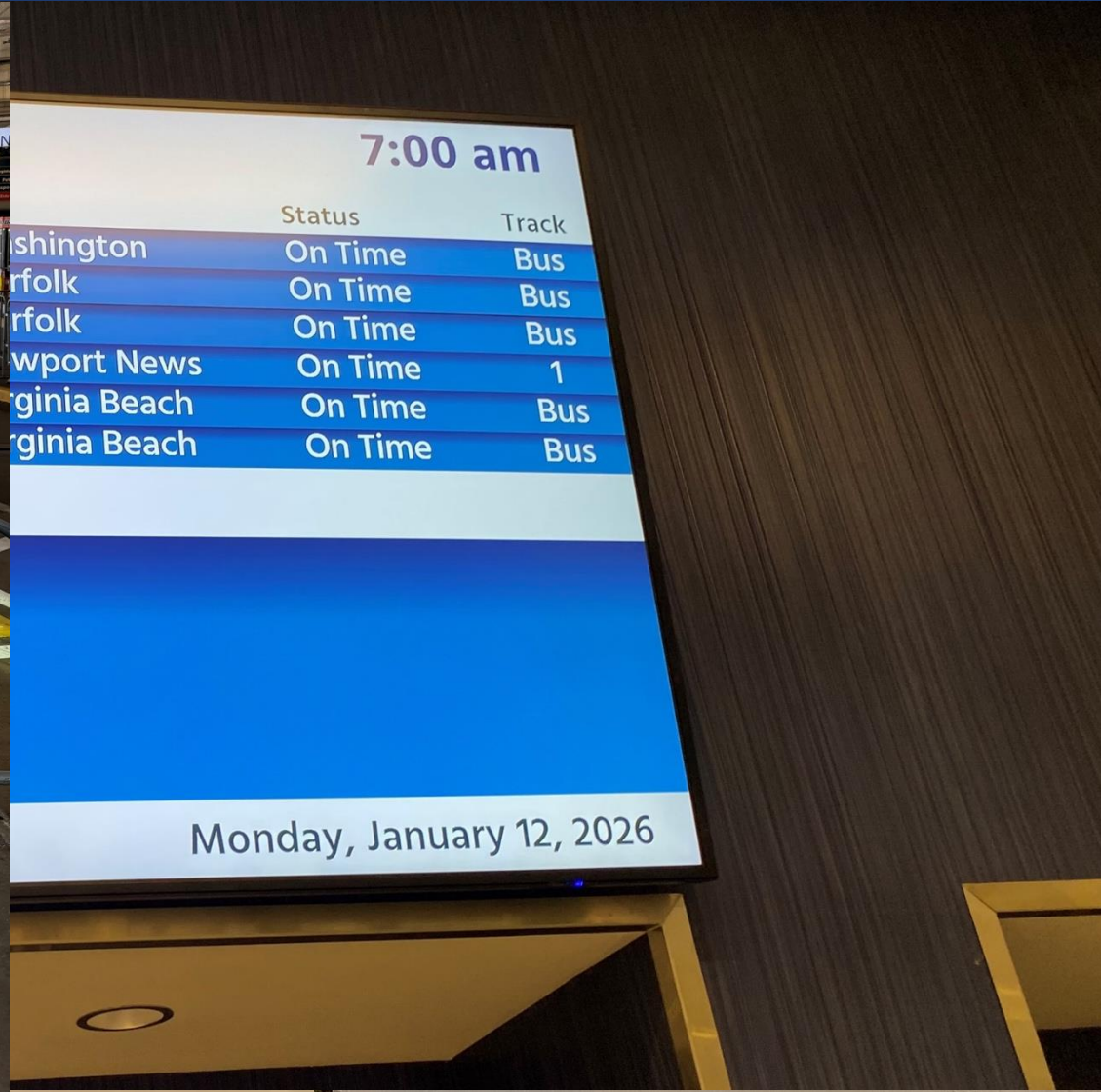
AMTRAK

Newport News, VA

Plan 0: Station Observations



Plan 0: Station Observations



Plan 0: Station Observations

